



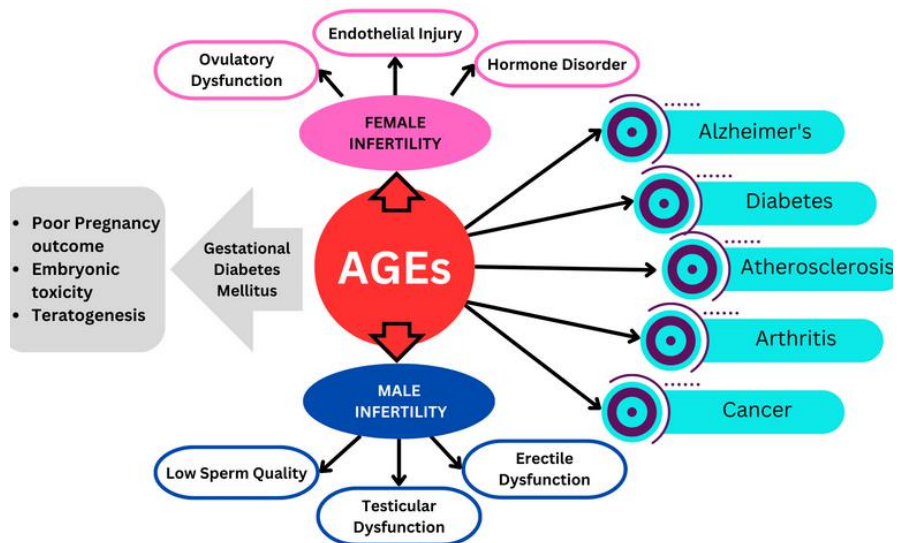
**BIOLITE ULTRA**



## Unlock Your Vitality and Optimize Your Blood Sugar!

A revolutionary multi-function **Glycemic & Vitality Complex** engineered to **combat modern health challenges** and **revitalize your well-being**. Biolite Ultra offers a comprehensive solution to address a myriad of health concerns, from **stress** and **infertility** to **aging-related conditions**.

The natural biological process called Glycation involves sugars adhering with proteins, lipids, or nucleic acids that result in creating harmful compounds named advanced glycation end products (AGEs). Several health disorders such as **diabetes**, **cardiovascular diseases** and **aging-related conditions** are associated with **AGEs**.



### AMWELL TECHNOLOGIES GROUP

support@amwellinc.com  
www.amwellinc.com

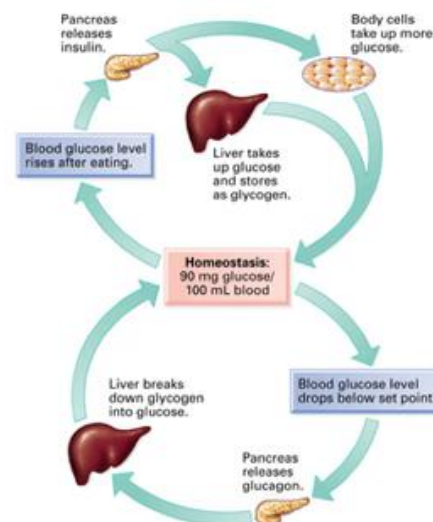
+1 949 3330646  
+1 737 3203252



## WHAT MAKES BIOLITE ULTRA SPECIAL?

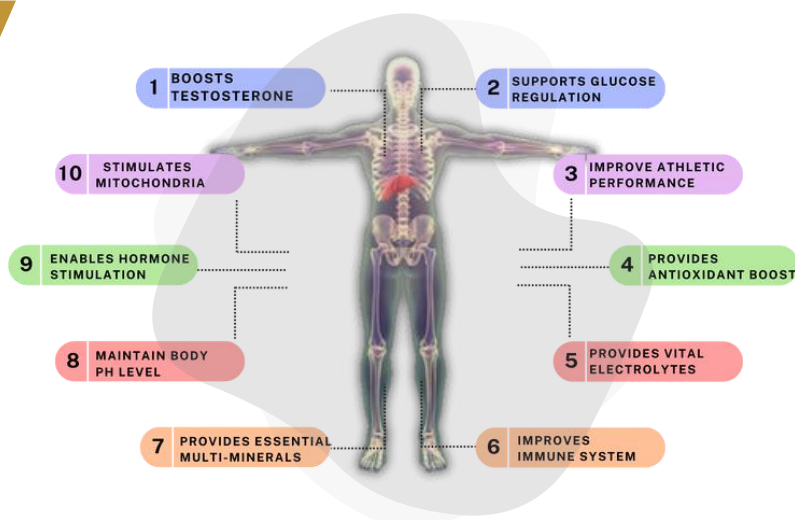
The primary uniqueness (USP) of Biolite Ultra lies in its potent ability curbing insulin resistance and protecting against them from developing into severely harmful ailments like AGE related malfunctions.

By minimizing excess glycemic damage within tissues from happening via proportional dosages being taken every day, it maintains healthy organs while carefully capping off the risk posed by excessive accumulation of AGE particles (age accelerator) into our bodies.



A unique concoction of **Fulvic Ionic Minerals**: sourced from ancient organic deposits, rich in essential trace elements and electrolytes for optimal function and **Astaxanthin**: harnessed from nature's own palette – microalgae, **energized** and **embedded** with **AFT Quantum resonance** to enhance energy, healing and rejuvenation.

**Biolite Ultra - Glycemic & Vitality Complex** isn't just a nutritional supplement; it's a daily ritual that empowers you to take charge of your health. Its liquid form ensures swift absorption, ensuring that you get the maximum benefit from each drop.



### BALANCE BLOOD SUGAR

Improve pancreatic function for adequate insulin production and combat insulin resistance.  
(Dual Action)

### TESTOSTERONE BOOSTER

In Men and Women, the primary role of testosterone is to put pressure on the bone marrow to increase red blood cells.  
(erythropoiesis)

## AMWELL TECHNOLOGIES GROUP

support@amwellinc.com  
www.amwellinc.com

+1 949 3330646  
+1 737 3203252





## BIOLITE ULTRA FORMULATION

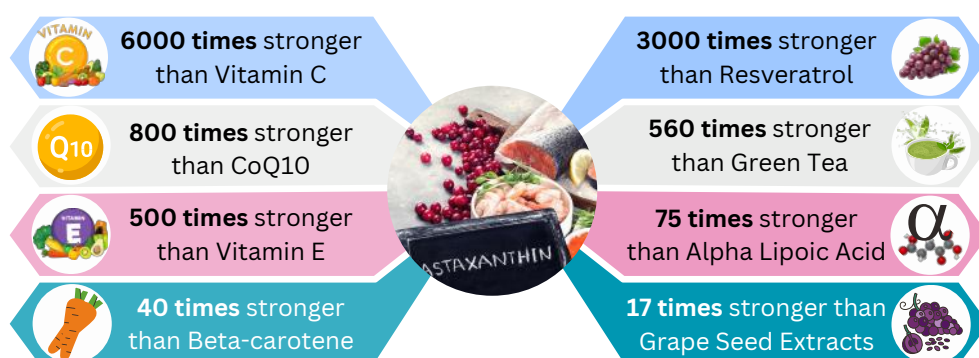
**Fulvic Ionic Trace Mineral Complex**, rich in bioactive compounds, said to contain over **70+ trace minerals**, and have been recognized for their remarkable **ability to support glucose regulation**. These minerals are known to **enhance insulin sensitivity**, facilitating the efficient utilization of glucose by cells. By improving **insulin responsiveness**, Fulvic Trace Minerals can contribute to stable blood sugar levels and minimize the risk of sudden spikes or crashes.



As an adaptogen, Fulvic Ionic Trace Minerals concentrate adapt to the body's individual needs, acting as a harmonizing force. Their unique nanomolecular structure allows them to penetrate cell membranes and stimulate mitochondria (the cell's energy engine), by transporting essential vitamins, minerals and nutrients into the cellular structure supporting stimulant free energy production, and enhanced hydration.

**Astaxanthin, a xanthophyll carotenoid**, is the potent carotenoid recognized as the most powerful natural compound with remarkable antioxidant activity. Renowned for its exceptional free-radical scavenging abilities, Astaxanthin supports your body's fight against oxidative stress, promoting a youthful radiance and reinforcing your **immune defenses**.

It's your **body's ultimate defender** against oxidative stress, promoting youthful **vitality and supporting a robust immune system**.



**Oxidative stress** is characterized by an imbalance between prooxidant and antioxidant species, leading to macromolecular damage and **disruption of redox signaling and cellular control**. It is a hallmark of various diseases including metabolic syndrome, chronic fatigue syndrome, neurodegenerative, cardiovascular, inflammatory, and age-related diseases.

Several **mitochondrial defects** have been considered to contribute to the development of oxidative stress and known as the major mediators of the aging process and subsequent age-associated diseases. Mitochondrial-targeted antioxidants prevent or slow down these processes and **prolong longevity**.

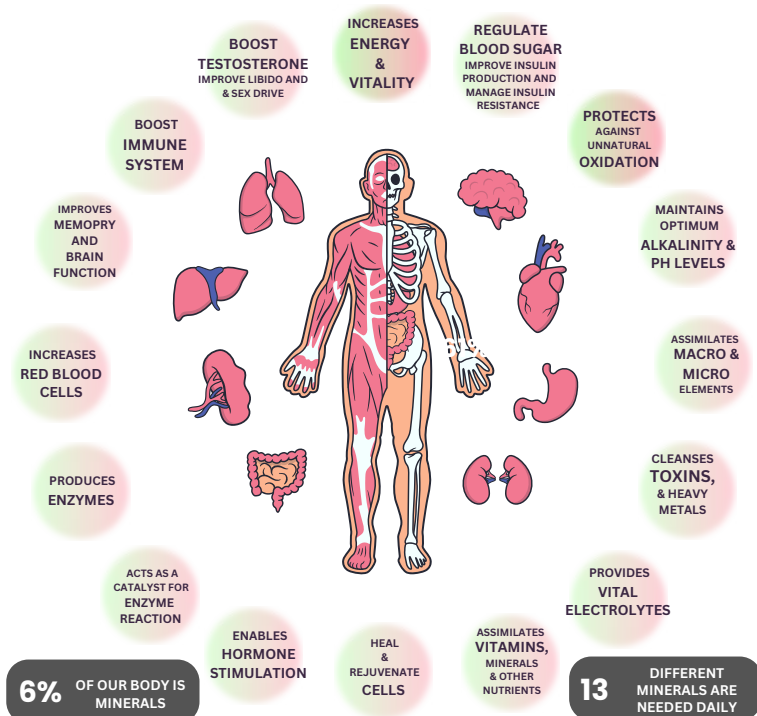
## AMWELL TECHNOLOGIES GROUP

support@amwellinc.com  
www.amwellinc.com

+1 949 3330646  
+1 737 3203252



# POWER UP WITH BIOLITE ULTRA



## BALANCE BLOOD SUGAR

Optimizes the function of pancreatic beta cells – the cells responsible for producing insulin. This dynamic interaction can potentially improve insulin secretion, aiding in the body's natural efforts to balance blood sugar.

## TESTOSTERONE BOOST

Cultivates improved testosterone levels among healthy adults subsequently contributing to improved production of red blood cells, libido and enhance sex drive.

## BOOST IMMUNE SYSTEM

Reduce inflammation, prevents cardiovascular diseases, and neurodegenerative disorders, and also stimulates immunization.

**“You can trace every sickness, every disease and every ailment to a mineral deficiency”**

Dr. Linus Pauling  
(2 times Nobel Prize Winner)

## BIOLITE ULTRA



**70+ TRACE MINERALS AND ELECTROLYTES  
15+ AMINO ACIDS  
14+ ORGANIC ACIDS,**

## COMBAT INSULIN RESISTANCE

Our potent formula curbs insulin resistance, safeguarding against AGE-related malfunctions and preserving organ health.

## SYNERGISTIC BENEFITS

Vital bodily functions, detoxification, healing, including metabolic function, tissue repair, growth, and development.

## VITAL ELECTROLYTES

May increase generation of hydroelectric energy in your body's cells, triggers nerve - cell communication and information processing, which helps to cleanse, unblock energy, balance energy and support healing



Directions: Shake well and add 15 drops or 1/2 dropper (0.75ml) to a glass of water and drink - anytime of the day, before meal.  
Bottle contains: 50ml / 1 month supply for 2 person.

## AMWELL TECHNOLOGIES GROUP

support@amwellinc.com  
www.amwellinc.com

+1 949 3330646  
+1 737 3203252



## ABOUT MINERALS & ANTIOXIDANTS

Minerals are naturally occurring inorganic substances that are essential for various physiological functions in the human body. They play crucial roles in processes such as metabolism, bone formation, nerve function, and hormone regulation. Trace minerals are minerals that are required by the body in smaller amounts compared to major minerals but are equally important for maintaining health. These include minerals like iron, zinc, copper, selenium, and chromium, among others.

Our bodies cannot produce minerals on their own, so we must obtain them from external sources such as food and supplements. Minerals are found in a wide variety of foods, including fruits, vegetables, nuts, seeds, dairy products, meats, and seafood. The absorption of minerals can vary depending on factors such as the type of mineral, the form it's in, and other dietary components. Studies confirm that, due to over-cultivation, toxicity in soil, use of synthetic fertilizers and pesticides, our food we eat are depleted of natural minerals and trace elements

### What are the critical health issues we will face if there are mineral deficiencies?

- Mineral deficiencies can lead to a range of health issues and complications. For example:
- Iron deficiency can cause anemia, fatigue, and impaired cognitive function.
- Calcium deficiency can weaken bones and increase the risk of osteoporosis.
- Zinc deficiency can weaken the immune system and impair wound healing.
- Magnesium deficiency can lead to muscle cramps, irregular heartbeat, and fatigue.
- Iodine deficiency can result in thyroid dysfunction and developmental issues.

### What are the major benefits of minerals and antioxidant?

- Supporting Immune Function: Bolster the immune system, defend against infections and illnesses.
- Promoting Heart Health: Contribute to cardiovascular health, proper blood pressure, cholesterol levels, and overall heart function.
- Regulating Blood Sugar Levels: Help regulate blood sugar levels, improve insulin sensitivity and reduce the risk of diabetes-related complications.
- Protecting Cells from Damage: Neutralize harmful free radicals, reducing oxidative stress and preventing cellular damage that can lead to chronic diseases.
- Enhancing Skin Health: Help maintain healthy skin by protecting against UV damage, reducing inflammation, and promoting collagen production for a youthful complexion.
- Boosting Energy Levels: Energy production, metabolism, and combat fatigue by reducing oxidative stress.
- Improving Bone Strength: Essential for bone health and, may help reduce bone loss and prevent osteoporosis.
- Supporting Brain Function: Protect brain cells from oxidative damage and inflammation, promoting cognitive function, memory, and overall brain health.
- Promoting Longevity: By reducing inflammation, protecting against chronic diseases, and supporting overall health.

**Astaxanthin** is a superfood for the cells that provides the highest antioxidant level for the body. It is known as "super vitamin E" because its antioxidant activity surpasses that of other carotenoids

It helps to prevent diseases caused by cell oxidation and has a high improvement effect on such diseases.

### Mineral found in Fulvic Ionic Trace Mineral Complex:

Fulvic Acid, Antimony, Sulfur, Barium, Boron, Calcium, Chromium, Cobalt, Iodine, Lanthanum, Magnesium, Manganese, Molybdenum, Neodymium, Phosphorus, Potassium, Rubidium, Selenium, Silicon, Silver, Sodium, Vanadium, Zinc, and Zirconium. Carbon (Total Organic), Iron, Copper, Germanium, Gold, Platinum, Sulfur, Fluoride, Niobium, Iridium, Strontium, Titanium, Palladium, Tungsten, Tin, Rhenium, Nickel, Lithium, Gallium, Yttrium, Bismuth, Hafnium, Cadmium, Thorium, Cerium, Tellurium, Beryllium, Samarium, Dysprosium, Erbium, Indium, Scandium, Ruthenium, Tantalum, Rhodium, Thulium, Thallium, Holmium, Ytterbium, Terbium, Lutetium, Gadolinium, Europium, and Praseodymium.

### DISCLAIMER

*This is a natural dietary supplement and are not intended to diagnose, treat cure or prevent any disease. The information and statements regarding the dietary supplement have not been evaluated by the Food and Drug Administration. If you have a medical condition or disease, please consult your health care provider.*

## AMWELL TECHNOLOGIES GROUP

support@amwellinc.com  
www.amwellinc.com

+1 949 3330646  
+1 737 3203252

